

Optical fibre cleaver

# FC-7LS



## Easy one-hand operation

Light weight

Handy to use in high and narrow space

High quality blade for over 48,000 cleaves

# Optical fibre cleaver FC-7LS



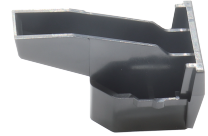
FC-7LS

Single Fibre adapter



AP-FC7LS-L

Fibre offcut bin



TR-FC7LS

## Specifications

Items	FC-7LS	
Applicable fibre	Material	Silica glass
	Cladding diameter	Φ 125 μm
	Coating diameter	Φ 0.2, 0.25, 0.9mm buffered fibre, 2 & 3mm jacketed cord
	Cable type	Rectangular drop cable (2x3mm), 3.5mm round drop cable
	Fibre count	Single fibre
Cleavelength	10-20mm	
Fibre placing	Single fibre adapter AP-FC7LS-L	
Cleave angle (Typ.)	Avg. 0.3 to 0.9 degrees	
Off-cut collector / Fibre offcut bin	Pre-fitted, TR-FC7LS	
Dimensions and weight	51(W)×106(D)×83(H) mm, Approx. 124 g	
Placeable blade	FCP-20BL	
Operating condition	-10-50°C and 0-95% RH (non-condensing)	
Storage condition	-40-80°C and 0-95% RH (non-condensing)	
Blade life <sup>*1</sup>	48,000 fibres (2,000 fibres × 24 positions)	

\*1 : Blade life may vary depending on the operating environment.

## Standard package

Part name	Part No.	Q'ty
Main body	FC-7LS	1pc
Single fibre adapter	AP-FC7LS-L	1pc
Fibre offcut bin	TR-FC7LS	1pc
Carrying case	CC-FC7LS	1pc

Main body and carrying case



## Optional accessories / Consumables

Part name	Part No.	Note
Single fibre adapter	AP-FC7LS-L	-
Fibre offcut bin	TR-FC7LS	-
Replacement blade	FCP-20BL	Common for FC-6+ series

## Fibre holders

Items	Part Name				
	FHS-025	FHS-09	FHS-025/LB5	FHD-1	FHC-3
Applicable fibre	Single 250um	Single 900um	Single 900um Loose buffered fibre	Single 250um Drop / Indoor cable	3mm cable
Cleave length	10mm				

 Sumitomo Electric Industries, Ltd.